

LATEST INNOVATION FROM THE LEADER IN BODY CONTOURING

The first device designed to eliminate fat cells and build muscle non-invasively by a unique combination of radiofrequency heating & HIFEM in a single treatment.

Synchronized RF
for fat elimination



HIFEM+
for muscle building

COMBINED 30-MIN. TREATMENT

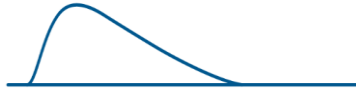


MORE FOR LESS

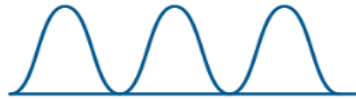
EMSCULPT^{neo}®

HIFEM+ PULSE PATTERNS

Preparation



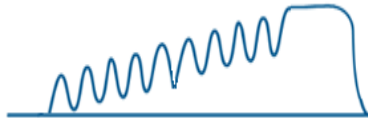
Set-up phase: helps with finding the right placement of applicator to induce uniform muscle stimulation



Twitches: helps with uniform heat distribution in the treated area via increasing blood flow, slowly preparing muscles for exposure to stress



Unfused (incomplete) tetanus: heated muscles are stimulated, but do not contract completely (are not fused completely)



Contraction build-up: A smooth build-up of tension from low to high frequency until full contraction is achieved



Fused (complete) tetanus: long intense contractions, muscles are completely contracted for multiple seconds



Dual frequency: A natural transition between the maximum muscle load and a twitching phase



Twitches: massaging phase, allows muscles to prepare for another section of supramaximal contractions and helps getting rid of lactic acid build-up

Treatment



MORE FOR LESS

EMSCULPT^{neo}

EMSCULPT NEO

TREATMENT PRESETS



MORE FOR LESS

EMSCULPT^{neo}®

PRESETS

- Emsculpt NEO allows three different presets
- Each of the presets have different indication
- Each body part have different presets available



HIFEM+RF PRESETS: RF THERAPY OUTPUT

Each HIFEM + RF Preset is divided into two sections:

Boost section:

- The device delivers high RF output to reach the therapeutic temperatures in the fat and warming up of muscles.

(This is why it is important to start the therapy with 100% RF output and then re-adjust based on patient's feedback)

Rest of therapy section:

- The remaining treatment time: The device maintains the therapeutic temperature for rest of the therapy.



HIFEM + RF ADVANCE PRESET

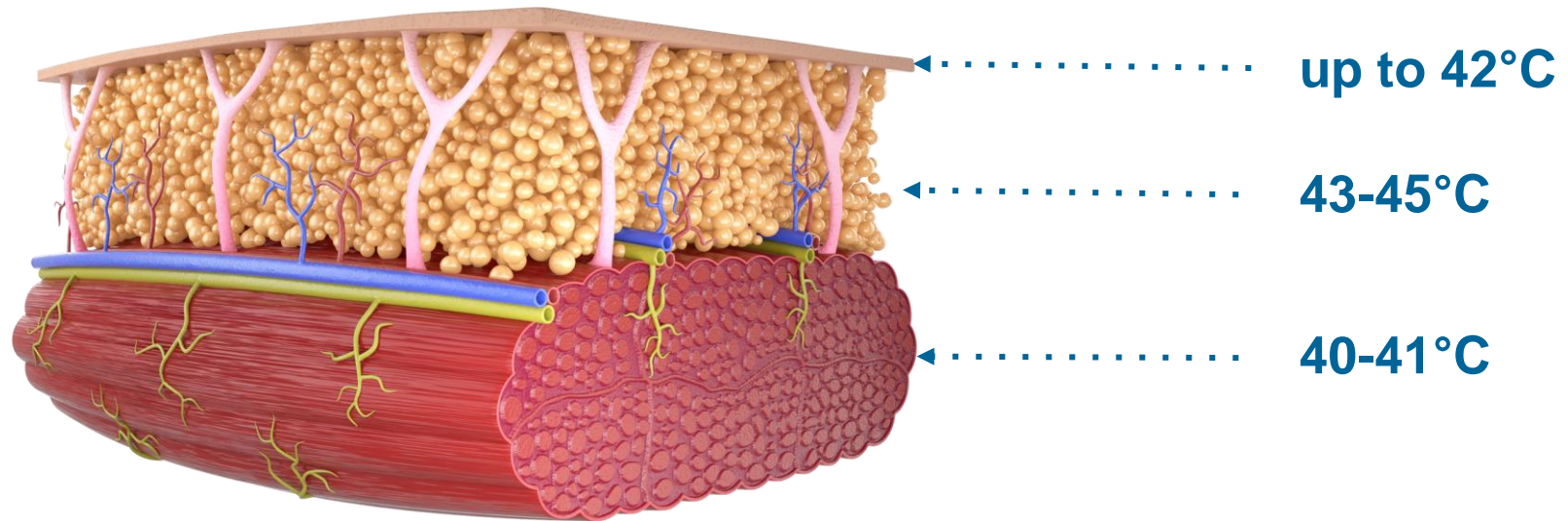


MORE FOR LESS

EMSCULPT^{neo}®

THE THERMAL PROFILE OF HIFEM+RF ADVANCE PRESET

Fat has the lowest conductivity and is thus selectively heated to higher temperatures when compared to the skin and the muscle tissues.



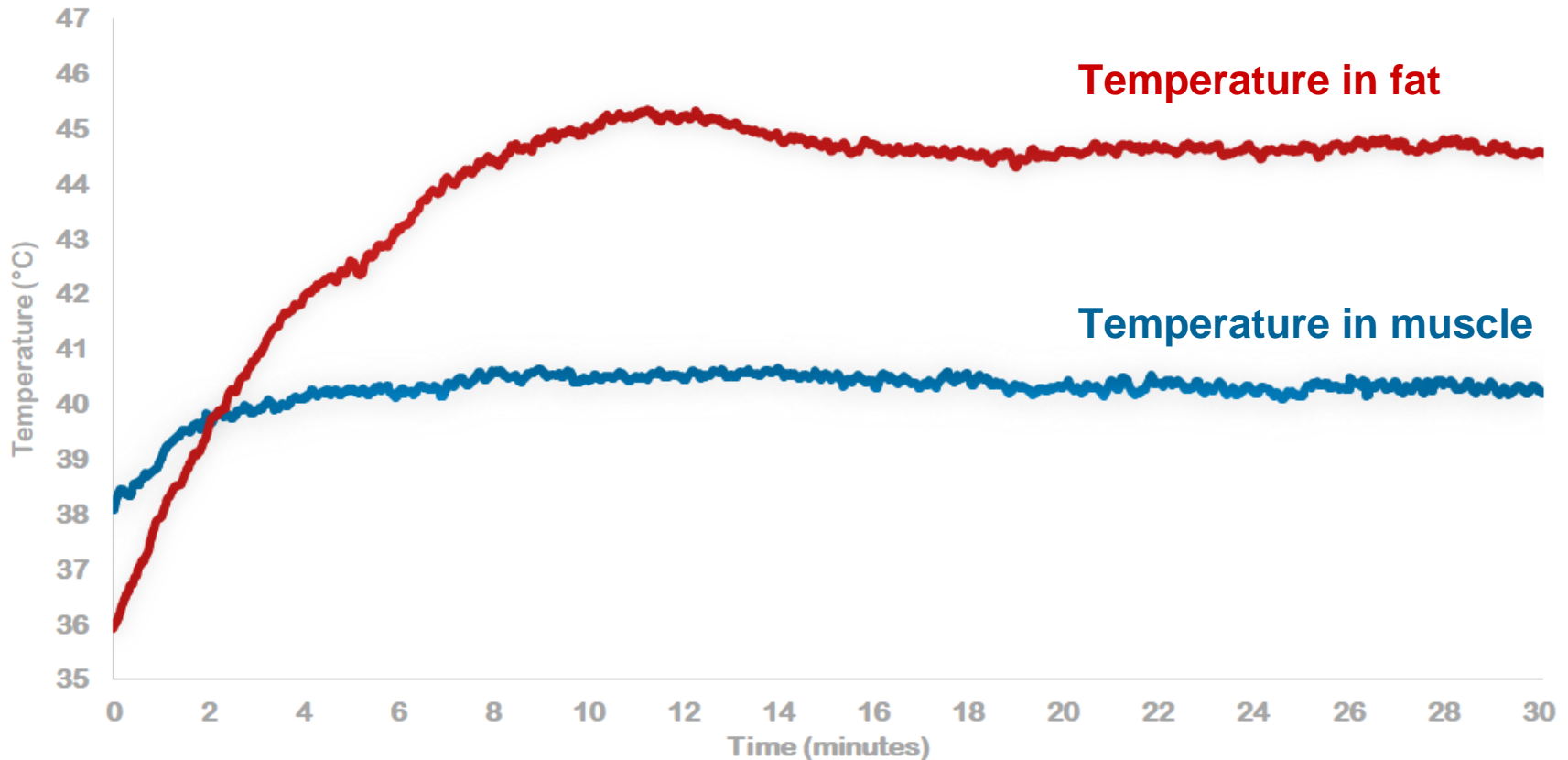
*Data on File



MORE FOR LESS

EMSCULPT[®]
neo

EFFECTS ON THE TISSUES - ADVANCE PRESET



Therapeutic temperature 42°C on skin:

- initialize apoptosis in fat within 4 minutes
- raise the temperature in muscle in 2 minutes

*Data on File

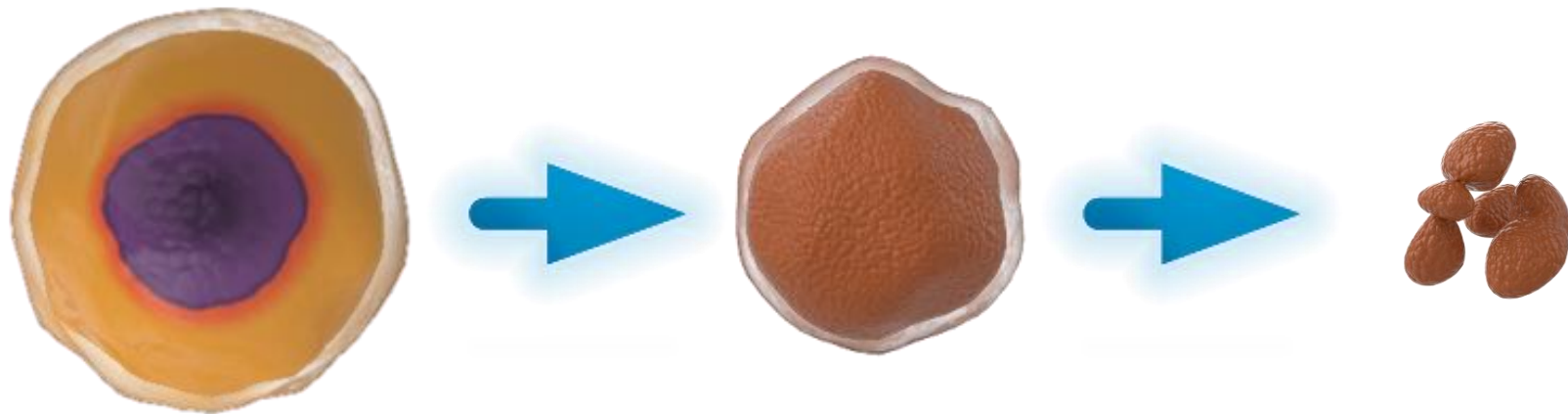


MORE FOR LESS

EMSCULPT[®] neo

EFFECTS ON THE ADIPOSE TISSUE

When exposed to temperatures **above 42-43°C** for a certain period of time, a large portion of **fat cells initiate their programmed death** ¹. This leads to the breakdown of fat and loss of adipocyte cellular integrity, fat apoptosis. Residues of the cells are slowly removed from the body.



¹Hyperthermic Injury to Adipocyte Cells by Selective Heating of Subcutaneous Fat With a Novel Radiofrequency Device: Feasibility Studies. Franco W. et al. Lasers Surg Med 42:361-370 (2010). ²Weiss RA, Bernardy J, Tichy F. Radiofrequency Treatment Used in Combination with HIFEM therapy: Histological Analysis including Scanning Electron Microscopy of Adipocytes. In: Phoenix, Arizona, USA: ASLMS; 2020.



MORE FOR LESS

EMSCULPT^{neo}

HIFEM+RF GENTLE PRESET

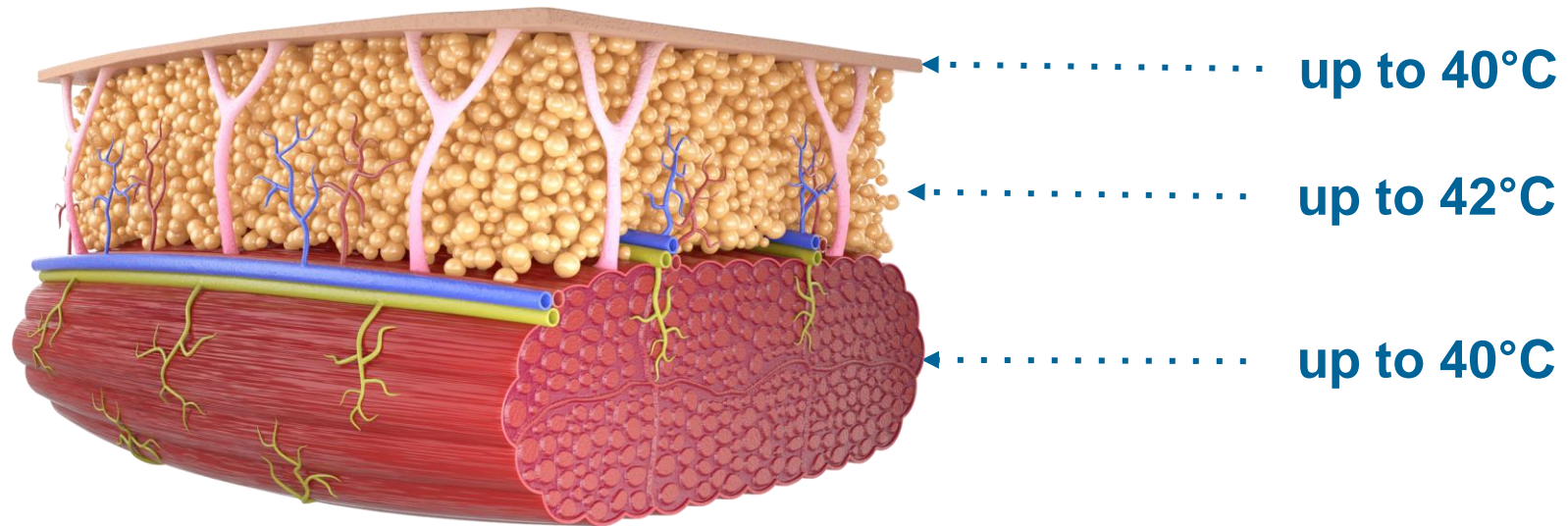


MORE FOR LESS

EMSCULPT^{neo}®

THE THERMAL PROFILE OF HIFEM+RF GENTLE PRESET

Fat has the lowest conductivity and is thus selectively heated to higher temperatures when compared to the skin and the muscle tissues.



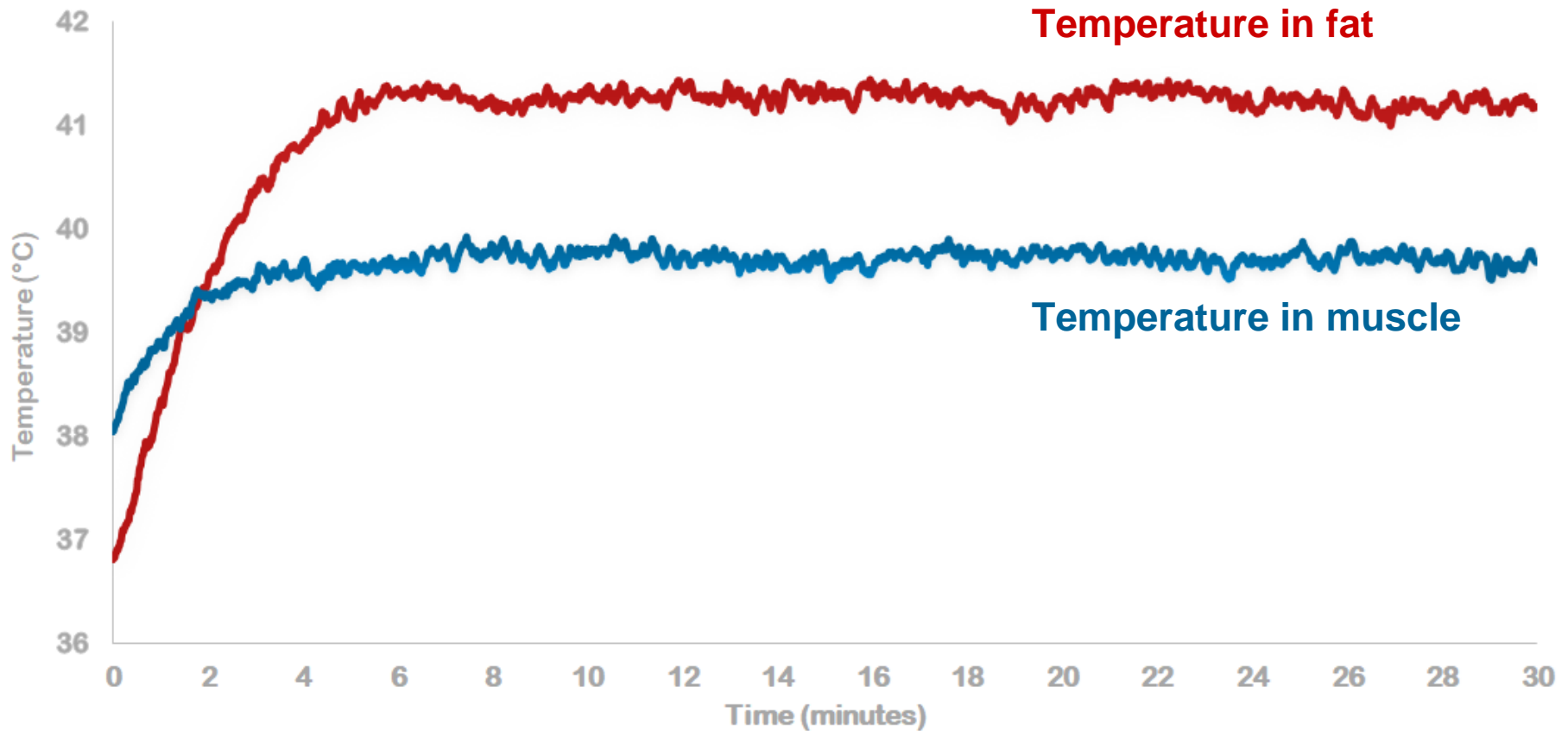
*Data on File



MORE FOR LESS

EMSCULPT^{neo}

EFFECTS ON THE TISSUES - GENTLE PRESET



Therapeutic temperature 40°C on skin:

- Does not initialize apoptosis in fat during the treatment
- Raise the temperature in muscle in 2 minutes

*Data on File



MORE FOR LESS

EMSCULPT^{neo}

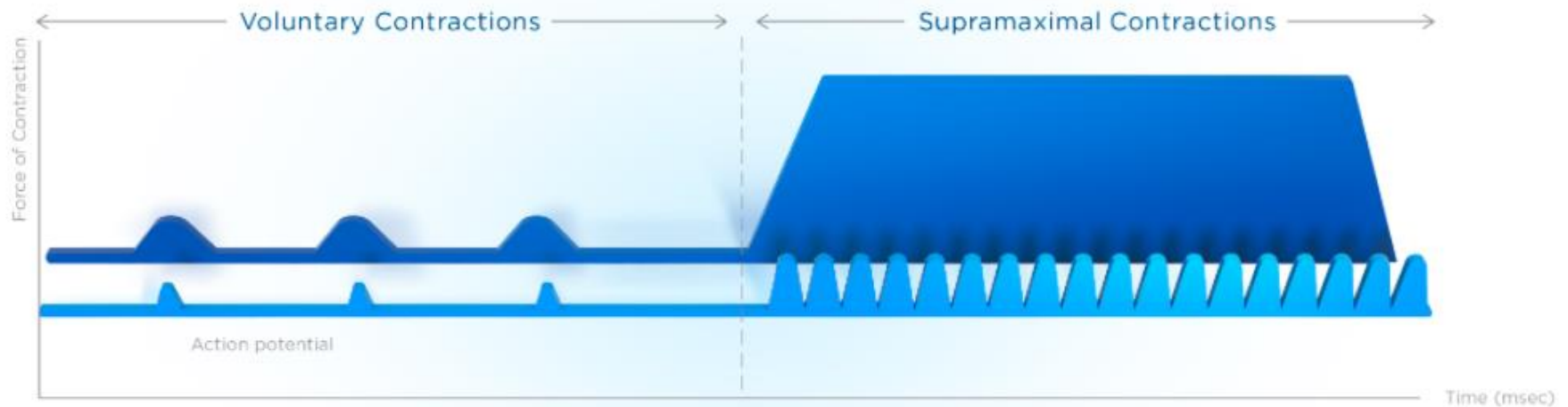
HIFEM CLASSIC PRESET



MORE FOR LESS

EMSCULPT^{neo}®

EFFECTS ON THE TISSUES - NO THERMAL EFFECT



- Presets from Original Emsculpt Device
- Does not have any Synchronized Radiofrequency Component
- Does not heat the muscles.

*Data on File



MORE FOR LESS

EMSCULPT[®]
neo

HIFEM+RF TREATMENT BENEFITS



MORE FOR LESS

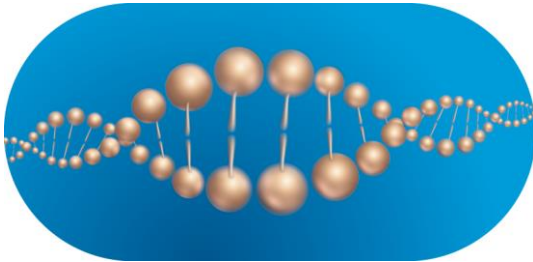
EMSCULPT^{neo}®

THE BENEFITS OF THE MUSCLE HEATING



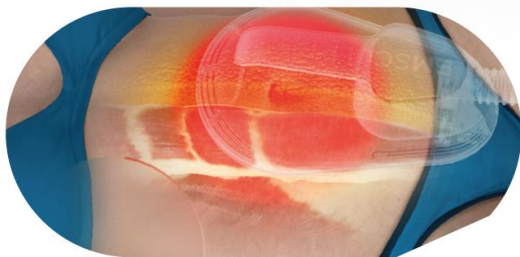
ENHANCED BLOOD SUPPLY

Better delivery of oxygen and nutrients, faster regeneration and growth of muscles



HEAT SHOCK PROTEINS

A significantly higher expression of heat shock proteins, which play a crucial role in muscle hypertrophy*



INCREASED COMFORT

With pre-heated muscles, patients are able to reach higher muscle contraction intensities in a shorter time. This further improves the treatment outcomes.

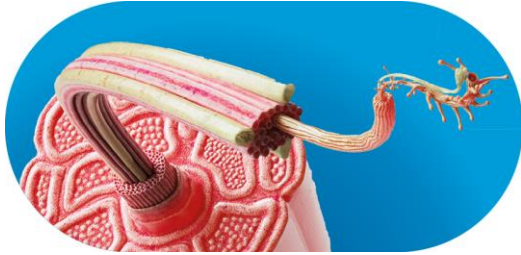
Halaas Y, Bernardy J, Ondrackova P, Dinev I. The skeletal muscle satellite cell activation by a combination of HIFEM procedure and radiofrequency treatment for body contouring: A first look at the NCAM/CD56 facilitated detection by fluorescent microscopy. In: Phoenix, Arizona, USA: ASLMS; 2020. Mayo Clinic 2019. <https://www.mayoclinic.org/healthy-lifestyle/fitness/in-depth/exercise/art-20045517> ; *Data on file



MORE FOR LESS

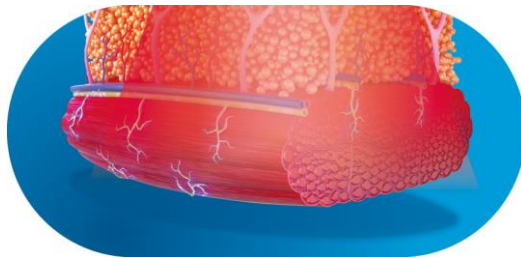
EMSCULPT^{neo}

EFFECTS ON THE MUSCLE TISSUE



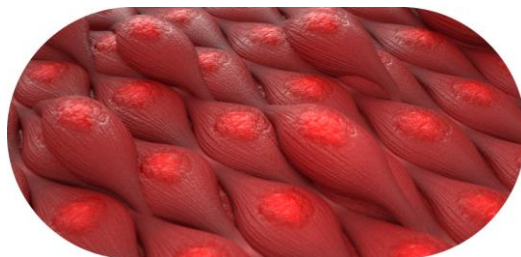
FASTER RESULTS THAN EXERCISE

Studies showed that Emsculpt NEO treatments activate muscle growth supporting cells to a similar level which is roughly equivalent to **12 to 16 week of resistance training program***.



SCULPTING OF HEATED MUSCLES

Due to the combination with RF, EMSCULPT NEO is the **only muscle device in the world that is sculpting heated muscles for optimal results.**



MUSCLE INCREASE

This leads to volumetric growth (hypertrophy) and increase of muscle fibers (hyperplasia).

On average muscles grow by 25%.**

*<https://pubmed.ncbi.nlm.nih.gov/17305939/> ** Data on file



MORE FOR LESS

EMSCULPT^{neo}

SUMMARY OF NEW EMSCULPT NEO STUDIES

7

New studies for simultaneous application of synchronized RF & HIFEM+

30+

More than 30 investigators were involved

-30%

Fat reduction at 3 months

+25%

Muscle growth at 3 months

-19%

Abdominal separation at 3 months

-5.9cm

Waist circumference reduction

*Data on file



MORE FOR LESS

EMSCULPT^{neo}

TREATMENT PRESET

- 30-minute session
- 4 treatments (5-10 days apart)
- Recommended MAP €550-600 per treatment



MORE FOR LESS

EMSCULPT^{neo}®

ABDOMINAL TREATMENT

For larger patients, use two applicators at the same time to ensure complete coverage of the treatment area. **Make sure the applicator(s) are fully in contact with the patient's skin.**

The two applicators should be close to each other but must never overlap.

When using a single applicator, the center of the stimulation coil should be positioned over the umbilicus.



PRESET	HIFEM Intensity	Initial RF intensity	Treatment time	Number of treatments	Frequency of treatments	Target skin temperature
HIFEM+RF Advance	Maximum tolerable	100%. Re-adjusted according to patient's feedback	30 min	4	5-10 days apart	42°C
HIFEM+RF Gentle	Maximum tolerable	100%. Re-adjusted according to patient's feedback	30 min	4	5-10 days apart	40°C
HIFEM Classic	Maximum tolerable	-	30 min	4	2-3 days apart	-



MORE FOR LESS

EMSCULPT^{neo}

BUTTOCK TREATMENT

Place the applicators over the top of the gluteus maximus. For the best results only gluteal muscles should be activated without any contractions in thighs.



PRESET	HIFEM Intensity	Initial RF intensity	Treatment time	Number of treatments	Frequency of treatments	Target skin temperature
HIFEM+RF Gentle	Maximum tolerable	100%. Re-adjusted according to patient's feedback	30 min	4	5-10 days apart	40°C
HIFEM Classic	Maximum tolerable	-	30 min	4	2-3 days apart	-



MORE FOR LESS

EMSCULPT^{neo}

FRONT THIGHS

Place the applicators on the front thighs and secure them with the help of fixation belt.



PRESET	HIFEM Intensity	Initial RF intensity	Treatment time	Number of treatments	Frequency of treatments	Target skin temperature
HIFEM+RF Gentle	Maximum tolerable	100%. Re-adjusted according to patient's feedback	30 min	4	5-10 days apart	40°C



MORE FOR LESS

EMSCULPT^{neo}

BACK THIGHS

Place the applicators on the back thighs and secure them with the help of fixation belt.



PRESET	HIFEM Intensity	Initial RF intensity	Treatment time	Number of treatments	Frequency of treatments	Target skin temperature
HIFEM+RF Gentle	Maximum tolerable	100%. Re-adjusted according to patient's feedback	30 min	4	5-10 days apart	40°C



MORE FOR LESS

EMSCULPT^{neo}

OUTER THIGHS

Place the applicators on the outer thighs and secure them with the help of fixation belt. Do not position the applicators over the hip joint.



PRESET	HIFEM Intensity	Initial RF intensity	Treatment time	Number of treatments	Frequency of treatments	Target skin temperature
HIFEM+RF Advance	Maximum tolerable	100%. Re-adjusted according to patient's feedback	30 min	4	5-10 days apart	42°C



MORE FOR LESS

EMSCULPT^{neo}

INNER THIGHS

Place the applicators on the inner thighs and secure them with the help of fixation belt. Make sure applicators are placed at least 6 inches (15 cm) apart from each other and the cooling vents are not covered during the therapy.



PRESET	HIFEM Intensity	Initial RF intensity	Treatment time	Number of treatments	Frequency of treatments	Target skin temperature
HIFEM+RF Advance	Maximum tolerable	100%. Re-adjusted according to patient's feedback	30 min	4	5-10 days apart	42°C



MORE FOR LESS

EMSCULPT^{neo}

BICEPS TREATMENT

Place the applicators below the biceps muscles. Secure the applicators with the help of fixation belts. You may place a pillow under patient's head for comfort. You can also perform the treatment in the sitting position with applicators attached to the biceps muscles from the top.



PRESET	HIFEM Intensity	Initial RF intensity	Treatment time	Number of treatments	Frequency of treatments	Target skin temperature
HIFEM+RF Gentle	Maximum tolerable	100%. Re-adjusted according to patient's feedback	30 min	4	5-10 days apart	40°C
HIFEM Classic	Maximum tolerable	-	20 min	4	2-3 days apart	-



MORE FOR LESS

EMSCULPT^{neo}

TRICEPS TREATMENT

Place the applicators below the triceps muscles. Secure the applicators with the help of fixation belts. You may want to place a bolster below the elbows for patient's comfort.



PRESET	HIFEM Intensity	Initial RF intensity	Treatment time	Number of treatments	Frequency of treatments	Target skin temperature
HIFEM+RF Gentle	Maximum tolerable	100%. Re-adjusted according to patient's feedback	30 min	4	5-10 days apart	40°C
HIFEM Classic	Maximum tolerable	-	20 min	4	2-3 days apart	-

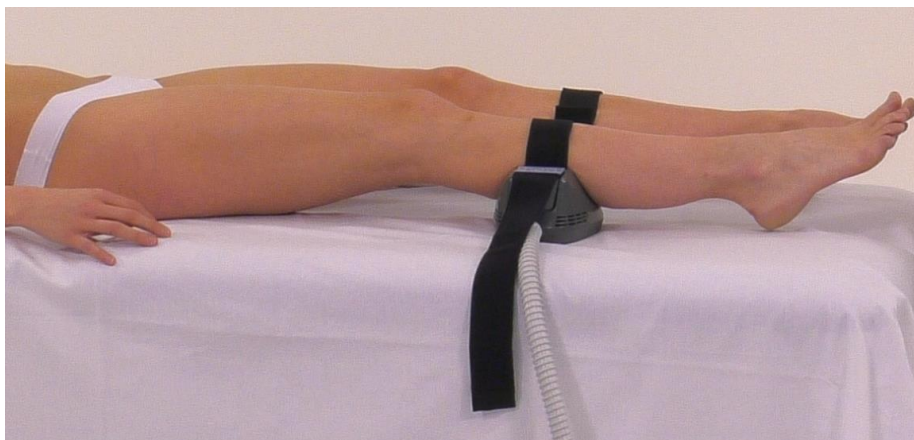


MORE FOR LESS

EMSCULPT[®] neo

CALVES TREATMENT

Place the applicators under the calves and secure them with the help of fixation belts. Make sure the applicators are fully in contact with the patient's skin. You may want to place a bolster below the ankles for patient's comfort.



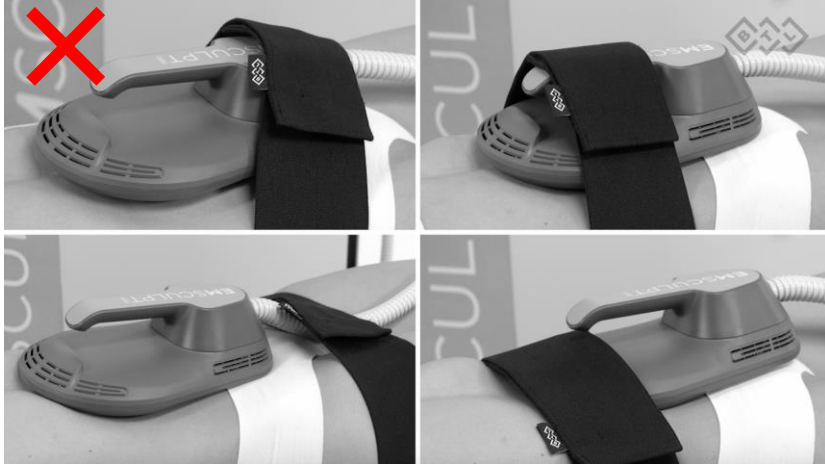
PRESET	HIFEM Intensity	Initial RF intensity	Treatment time	Number of treatments	Frequency of treatments	Target skin temperature
HIFEM+RF Gentle	Maximum tolerable	100%. Re-adjusted according to patient's feedback	30 min	4	5-10 days apart	40°C
HIFEM Classic	Maximum tolerable	-	20 min	4	2-3 days apart	-



MORE FOR LESS

EMSCULPT^{neo}

COMMON MISTAKES



Belt is not secured correctly



Do not treat over clothes.



Incorrect position of applicators



MORE FOR LESS

EMSCULPT[®] neo

POSSIBLE SIDE EFFECTS

The side effects may include, but are not limited to:

- Muscular pain
- Intramuscular fat decrease
- Temporary muscle spasm
- Temporary joint or tendon pain
- Local erythema or skin redness
- Increased menstrual flow in female patients*
- Panniculitis*

* New “Possible side effect” in comparison with Emsculpt



MORE FOR LESS

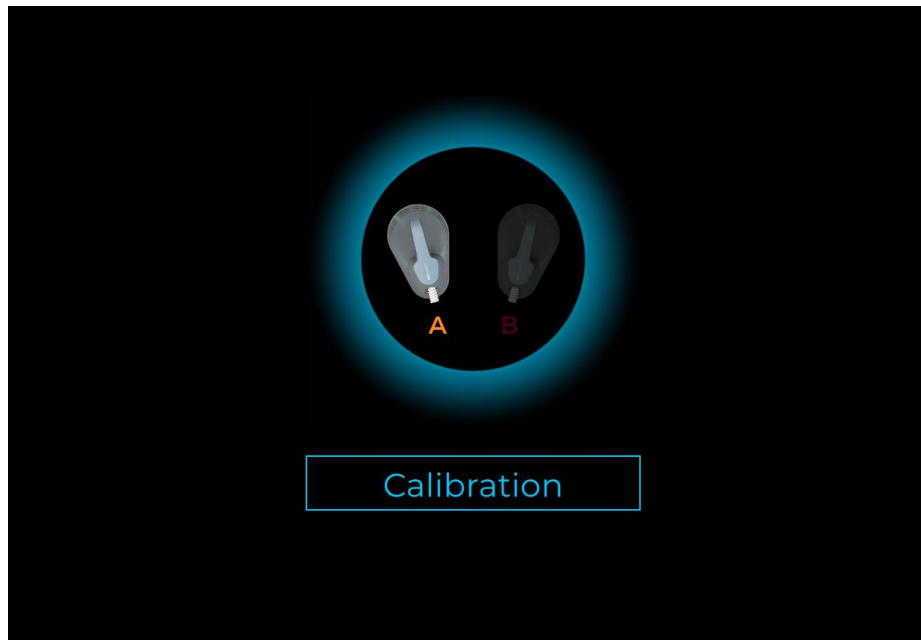
EMSCULPT^{neo}®

CALIBRATION OF APPLICATORS

Operator should calibrate the applicators :

1. When device is first time installed
 2. If applicators are switched for another pair
- Calibration can be found in Settings/Applicators/Calibration
 - Applicators must be removed from holders before calibration

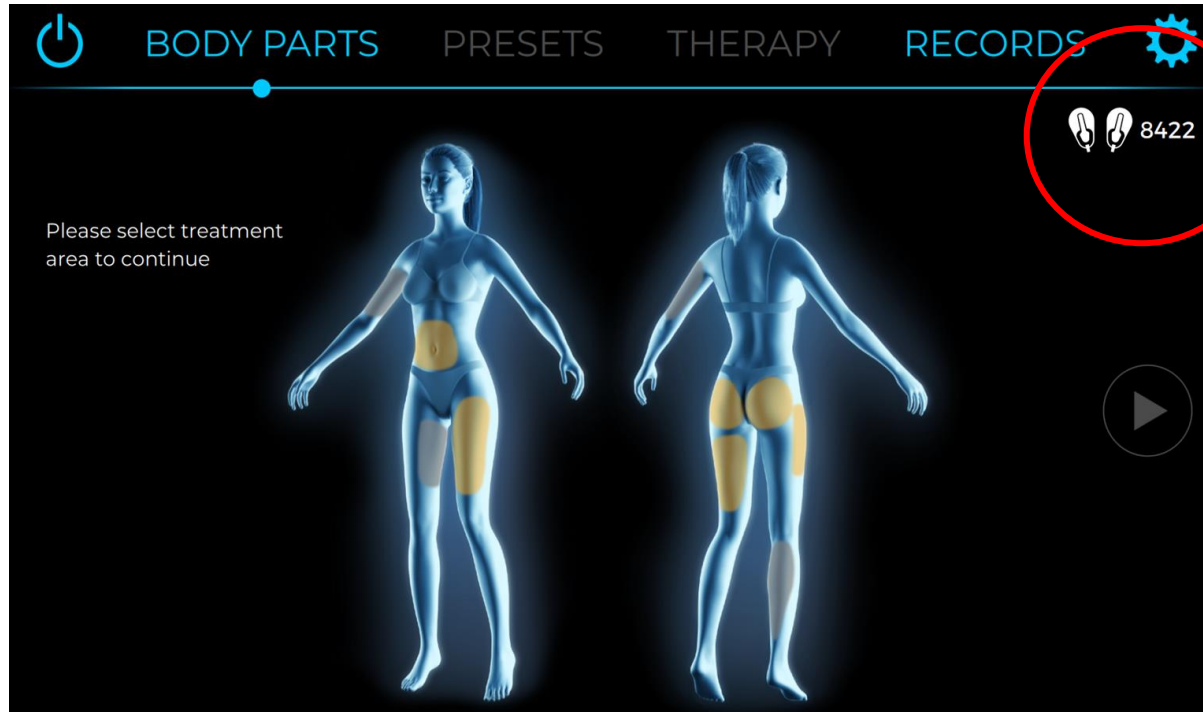
Calibration screen



Warning message



ADDITIONAL APPLICATORS INFO



- The exact **remaining lifetime can be clearly seen** on the home screen at any time
- All applicators (large and small) are tested and guaranteed for 9000 minutes (150 hours).
- After the lifetime is completed, the applicators need to be replaced
- Automatic notifications will inform the user whenever the applicator lifetime is depleted to 80% or more.



MORE FOR LESS

EMSCULPT[®]
neo

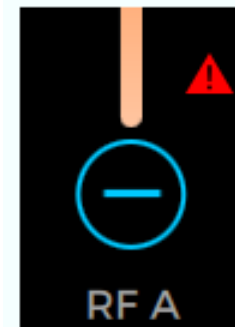
APPLICATOR CONTACT MONITOR (ACM)

- ACM measures the quality of the applicator-skin coupling.
- If the contact is not sufficient, the device shows a red triangle near applicator(s) sliders and a warning message is displayed. A sound notification is played.
- If a warning message is shown, operator should reposition the applicator(s) to re-establish a proper contact with a skin

Warning message:

Please reposition applicator(s) to maintain proper contact with the skin

Warning blinking triangle:



SKIN SURFACE TEMPERATURE MONITOR

- If the skin surface temperature is approaching 43°C, the device automatically controls the RF power, to avoid exceeding the maximum therapeutic temperature
- The therapy is interrupted if the temperature reaches 43°C
- If therapy is interrupted, operator should wait and start the therapy again and ask regularly for patient feedback.

Warning message

Applicator(s) exceeded allowed temperature! Please wait and start the therapy later.

